

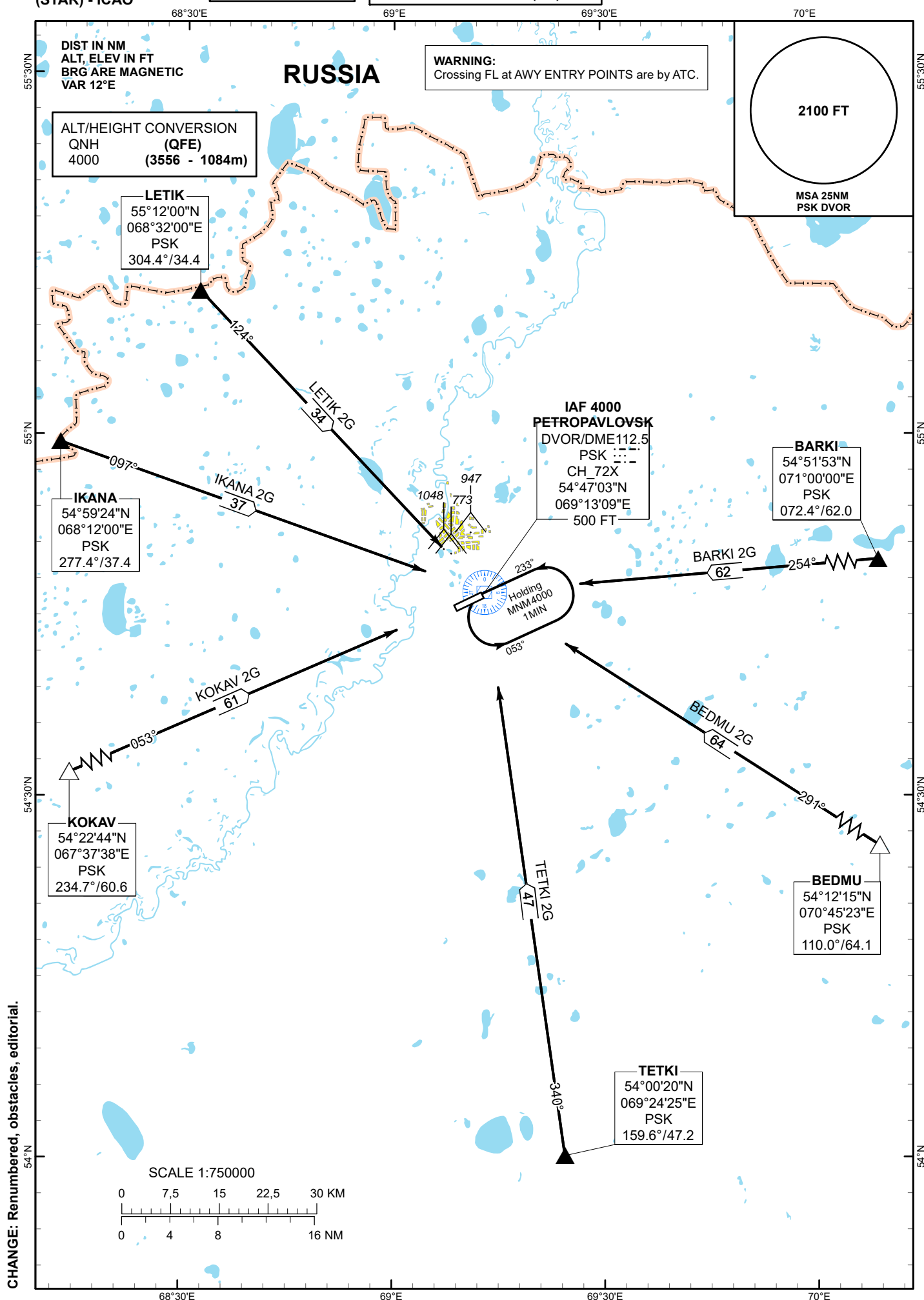
STANDARD ARRIVAL  
CHART - INSTRUMENT  
(STAR) - ICAO

TRANSITION ALTITUDE  
10000 FT

PETROPAVLOVSK TOWER 123.7  
PETROPAVLOVSK ATIS (EN) 127.4  
PETROPAVLOVSK ATIS (RU) 118.3

BARKI 2G BEDMU 2G  
IKANA 2G KOKAV 2G  
LETIK 2G TETKI 2G

PETROPAVLOVSK  
RWY 05



**STANDARD ARRIVAL ROUTES – INSTRUMENT (STAR)  
PETROPAVLOVSK RWY 05**

**BARKI 2G**

After crossing BARKI (N545153 E0710000), proceed on track 254° to DVOR/DME PSK.  
Cross DVOR/DME PSK at 4000 FT.

**BEDMU 2G**

After crossing BEDMU (N541215 E0704523), proceed on track 291° to DVOR/DME PSK.  
Cross DVOR/DME PSK at 4000 FT.

**TETKI 2G**

After crossing TETKI (N540020 E0692425), proceed on track 340° to DVOR/DME PSK.  
Cross DVOR/DME PSK at 4000 FT.

**KOKAV 2G**

After crossing KOKAV (N542244 E0673738), proceed on track 053° to DVOR/DME PSK.  
Cross DVOR/DME PSK at 4000 FT.

**IKANA 2G**

After crossing IKANA (N545924 E0681200), proceed on track 097° to DVOR/DME PSK.  
Cross DVOR/DME PSK at 4000 FT.

**LETIK 2G**

After crossing LETIK (N551200 E0683200), proceed on track 124° to DVOR/DME PSK.  
Cross DVOR/DME PSK at 4000 FT.